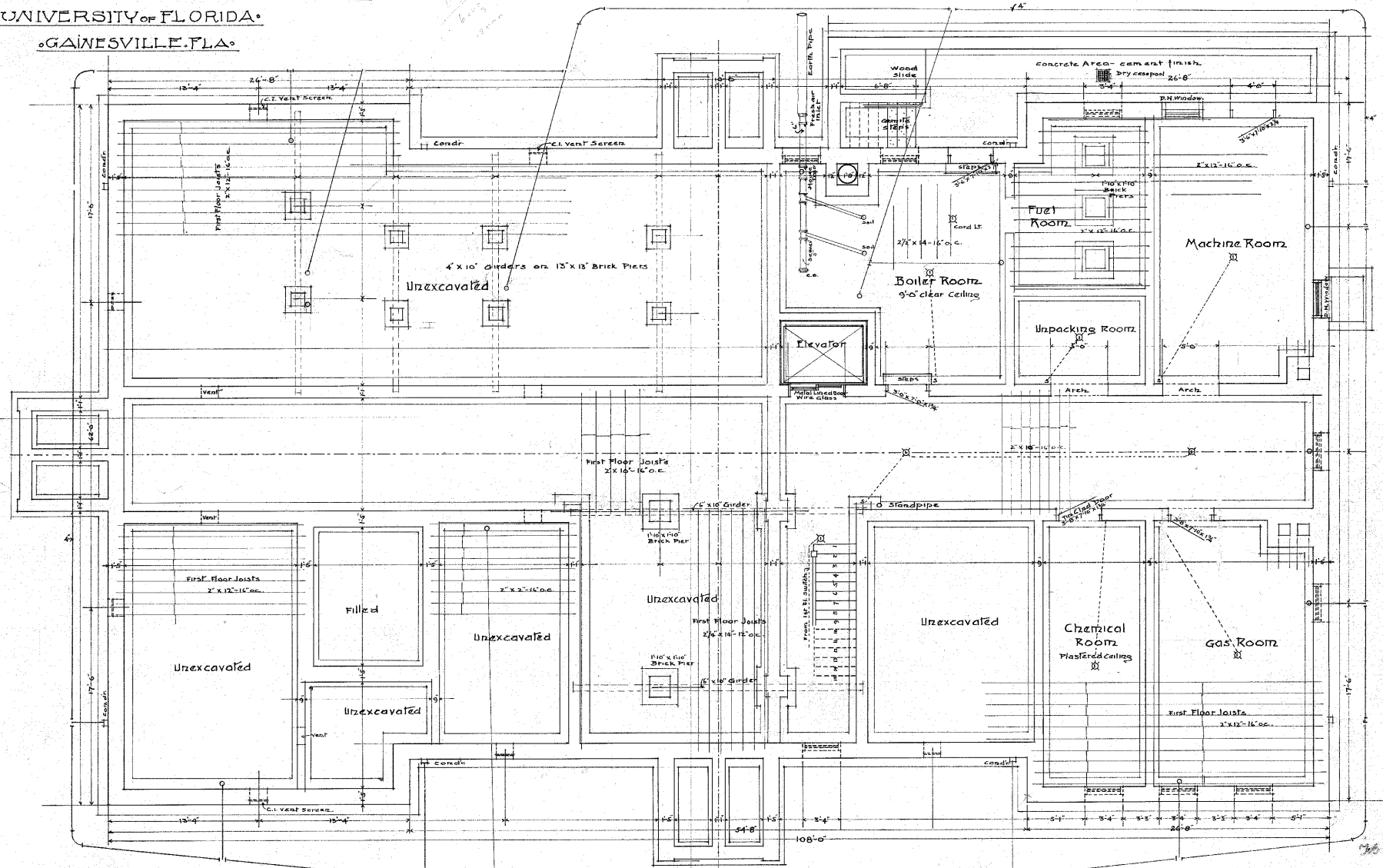


• AGRICULTURAL EXPERIMENT STATION •

• UNIVERSITY OF FLORIDA •

• GAINESVILLE, FLA. •

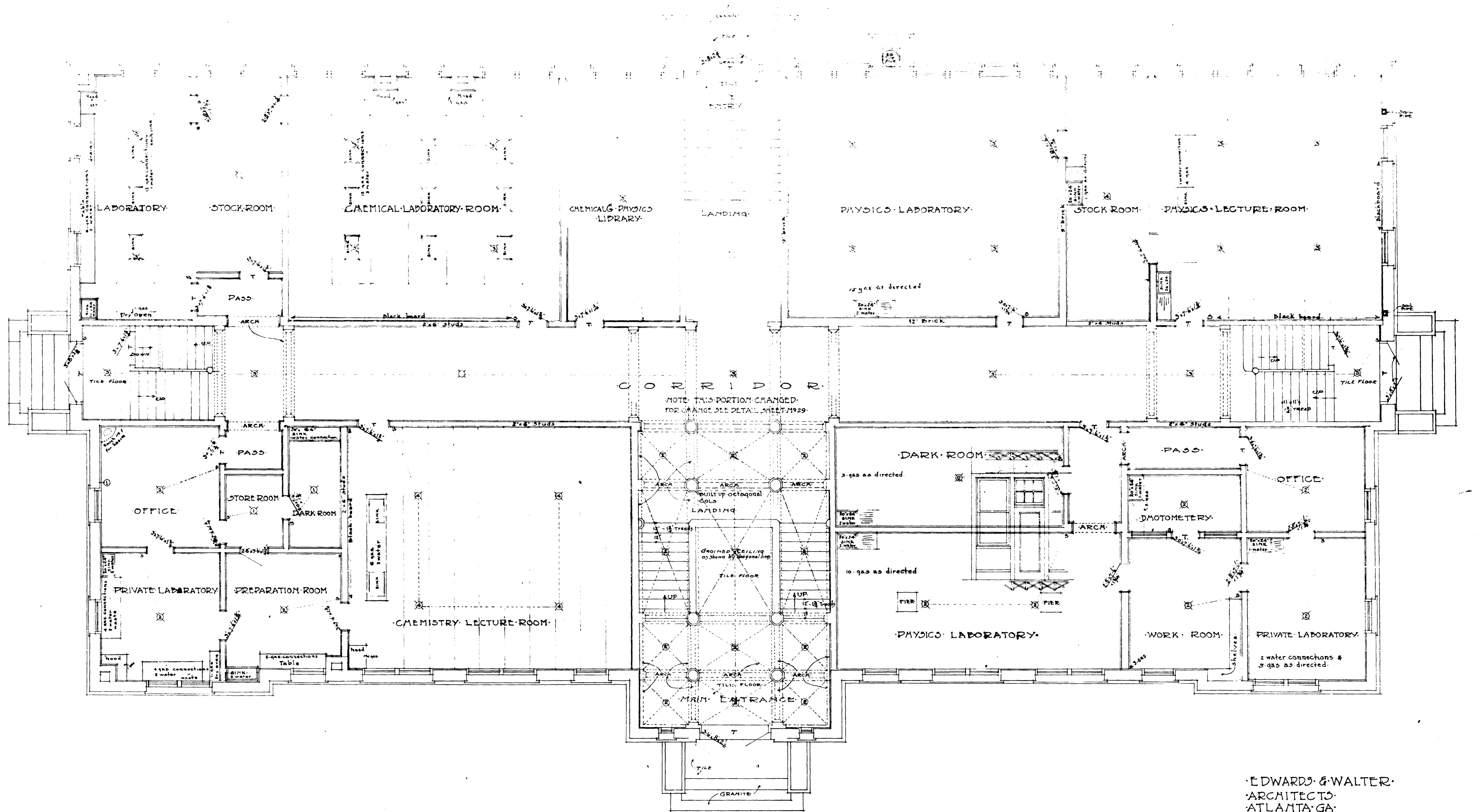


PLAN OF BASEMENT.
SCALE 1/4" = 1'-0"

EDWARDS AND WALTER
ARCHITECTS
ATLANTA, GA.
FILE No 204.
SHEET No 1.

BLDG # 13

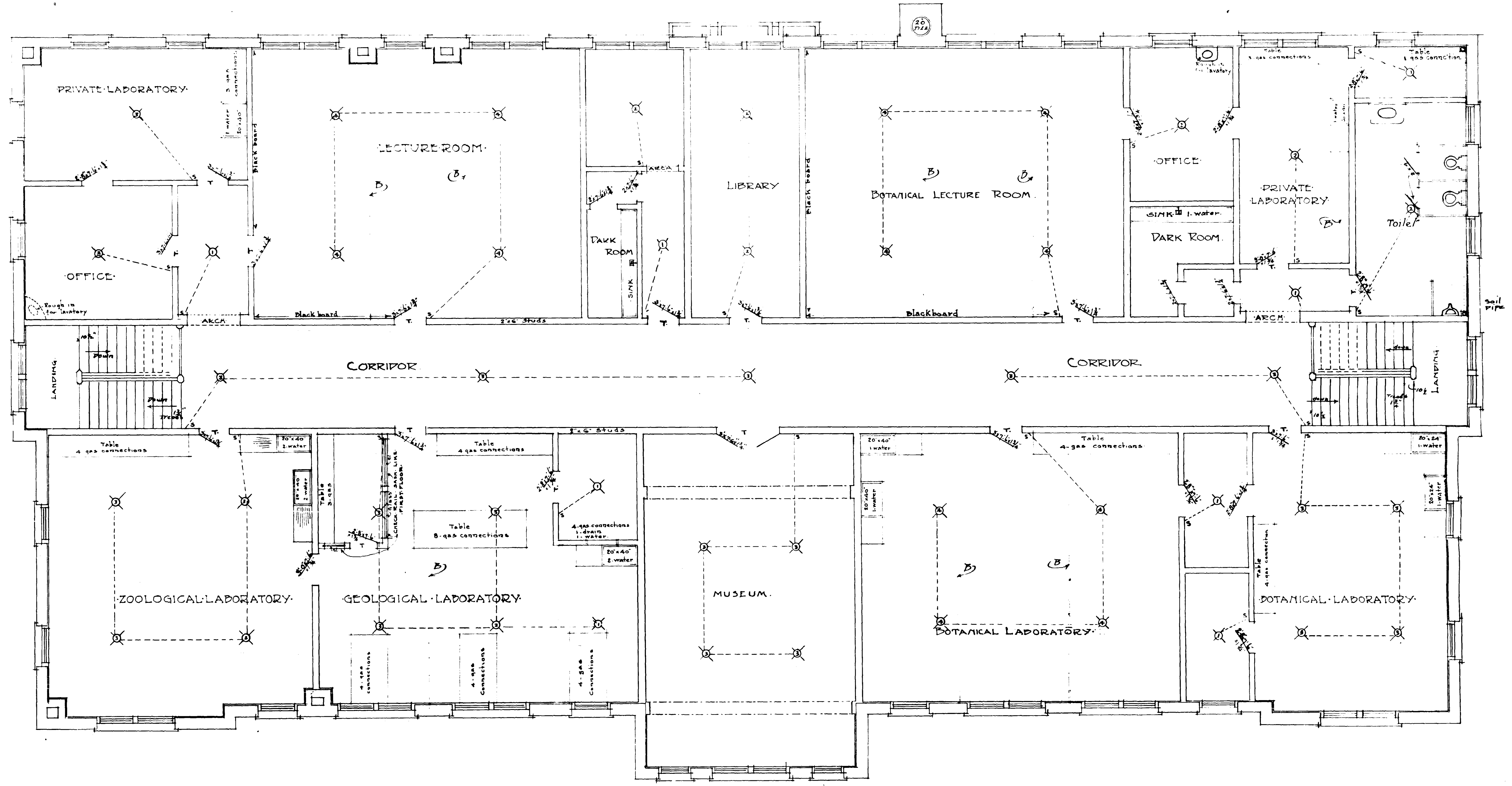
•SCIENCE BUILDING
 UNIVERSITY OF FLORIDA
 •GAINESVILLE FLA•



•PLAN OF FIRST FLOOR.
 Scale 1/4"

•EDWARDS & WALTER
 ARCHITECTS
 ATLANTA GA.
 FILE NO 202 REVISED DEC 18 09.

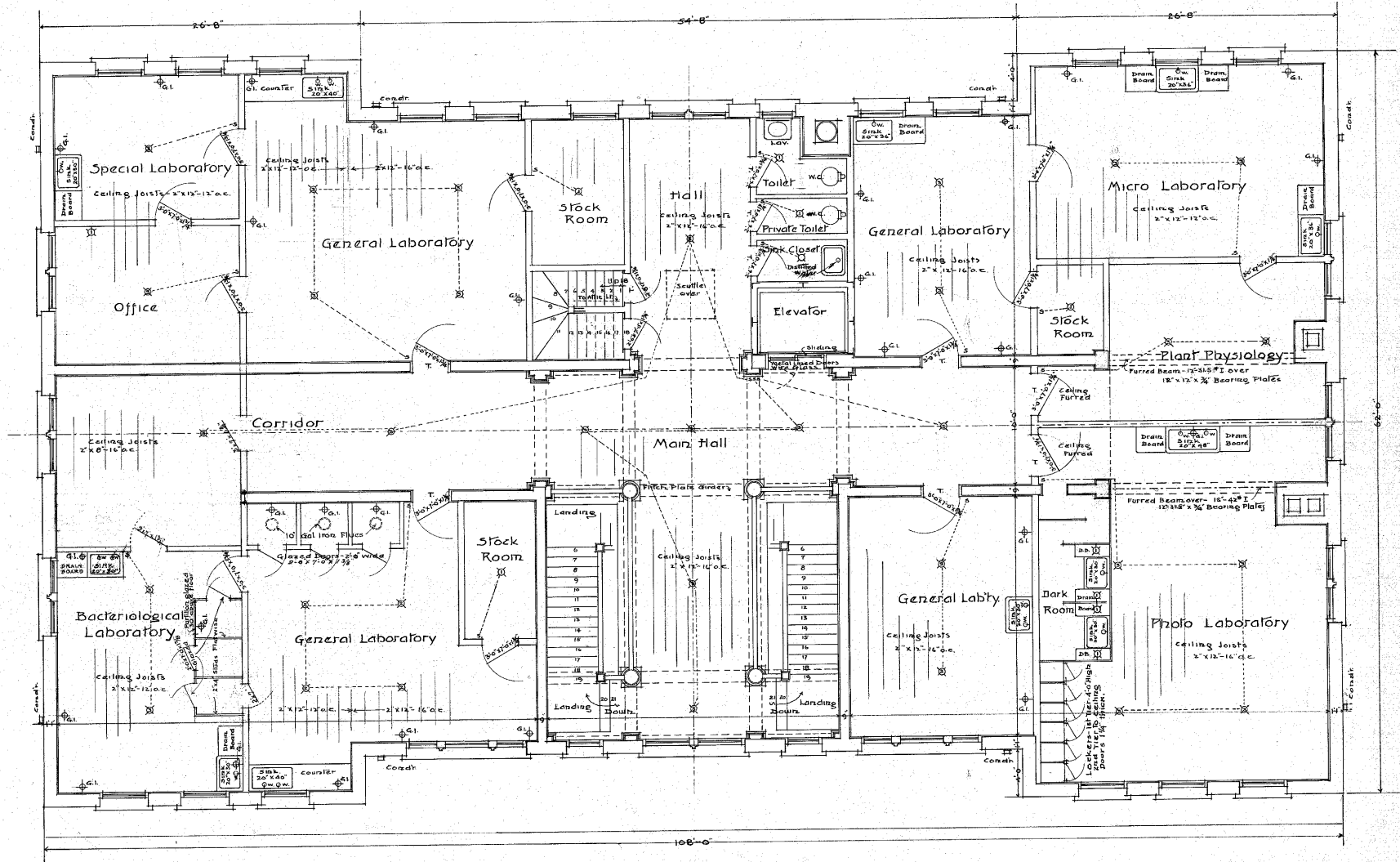
SCIENCE BUILDING
UNIVERSITY OF FLORIDA
GAINESVILLE · FLA.



SECOND FLOOR.
1/4" Scale.

EDWARDS & WALTER.
ARCHITECTS
ATLANTA · GA.
FILE NO. 202 SHEET NO. 3.
REVISED DEC. 18-09.

AGRICULTURAL EXPERIMENT STATION
UNIVERSITY OF FLORIDA
GAINESVILLE, FLA.



THIRD FLOOR PLAN
 SCALE: 1/4" = 1'-0"

NOTE - 2nd Floor Framing - Same as 2nd Floor.

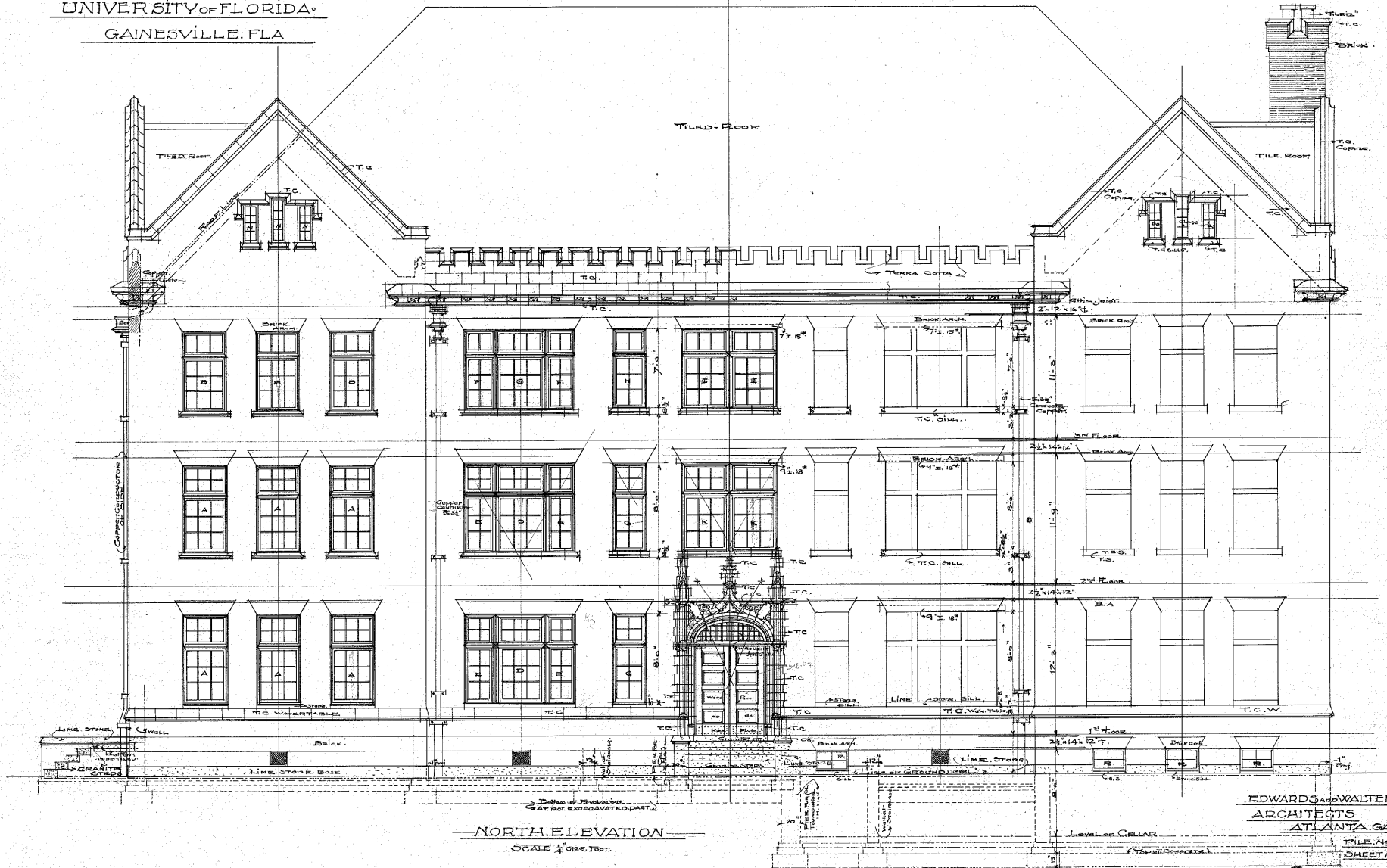
EDWARDS AND WALTER
 ARCHITECTS
 ATLANTA, GA
 FILE NO 204
 SHEET NO 4

BLDG #13

• AGRICULTURAL EXPERIMENT STATION •

UNIVERSITY OF FLORIDA •

GAINESVILLE, FLA



NORTH ELEVATION

SCALE $\frac{1}{4}$ OR. 100.

EDWARDS AND WALTER
ARCHITECTS
ATLANTA, GA.

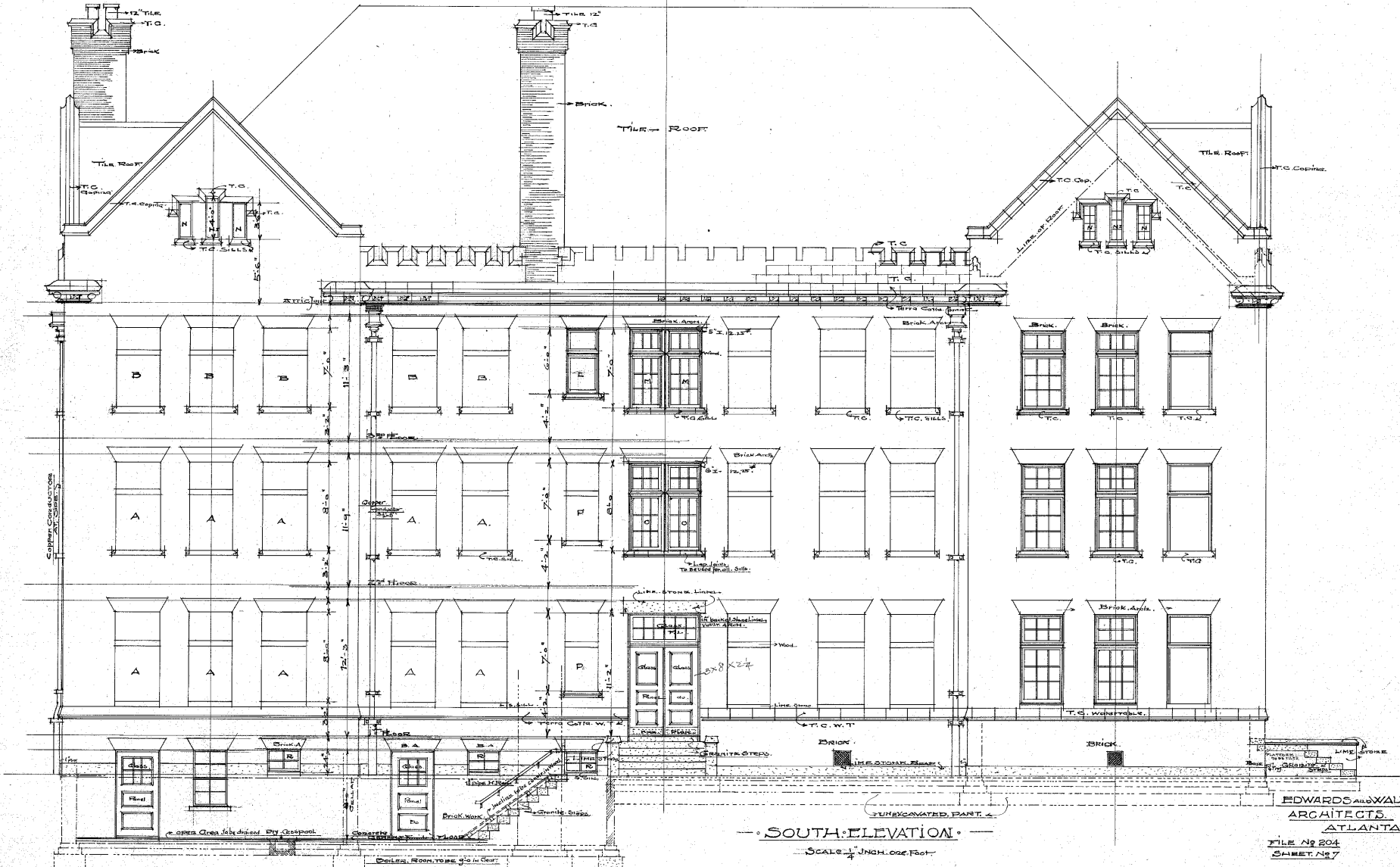
FILE NO 204
SHEET NO 6

BUDG #13

• AGRICULTURAL EXPERIMENT STATION •

• UNIVERSITY OF FLORIDA •

• GAINESVILLE, FLA. •



— SOUTH ELEVATION —

SCALE: 1/4" = 1'-0" (1/4" INCH = ONE FOOT)

EDWARDS AND WALTER
ARCHITECTS
ATLANTA, GA.

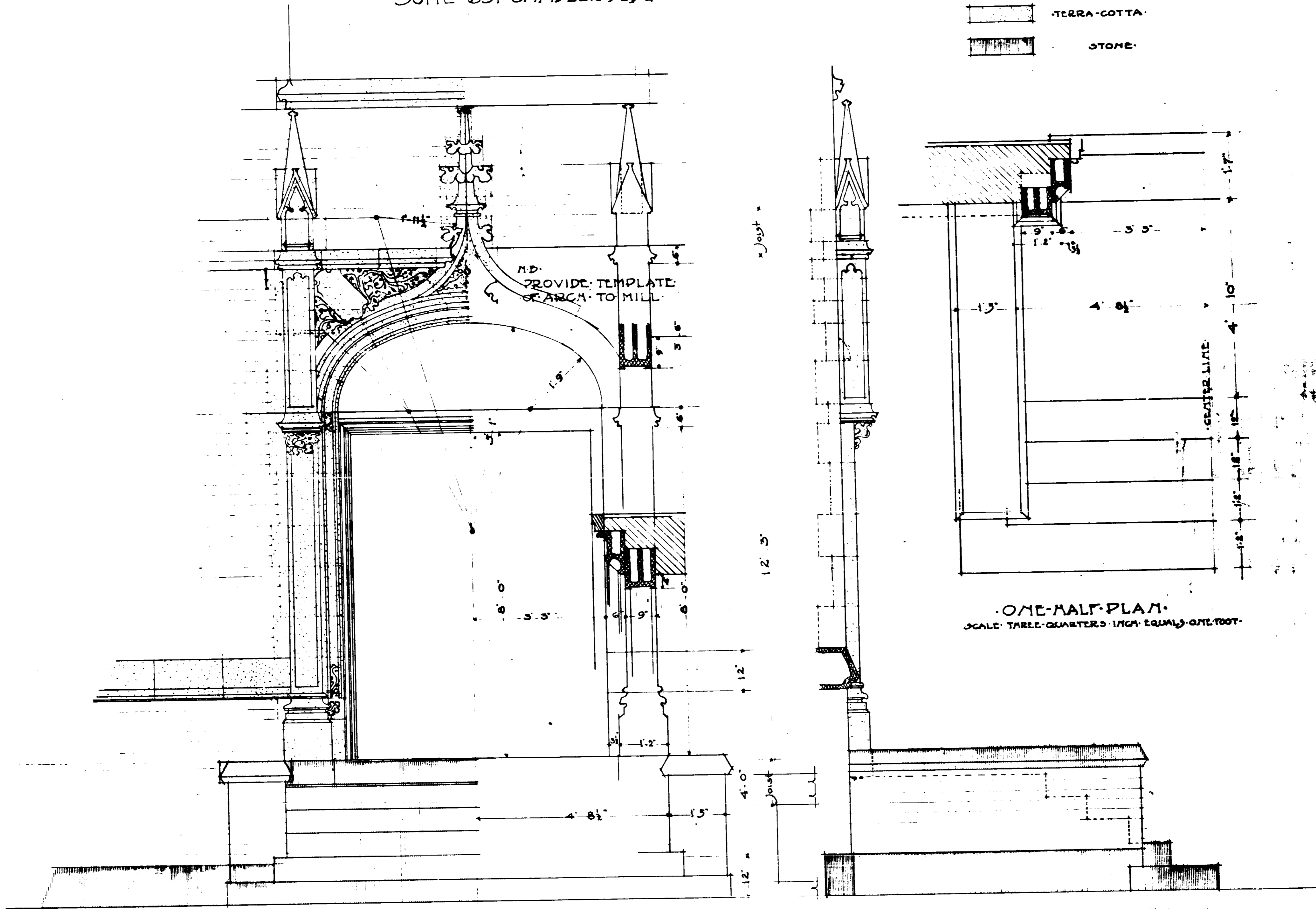
FILE NO 204
SHEET NO 7

BLDG #13

STONE AND TERRA-COTTA DETAILS · AGRICULTURAL EXPERIMENT STATION ·
 UNIVERSITY OF FLORIDA · AT GAINESVILLE · FLORIDA ·

EDWARDS AND WALTER ARCHITECTS ·
 SUITE 631 Candler Bldg. ATLANTA · GEORGIA ·

TERRA-COTTA ·
 STONE ·



FRONT ELEVATION ·
 SCALE: 3/4" = ONE FOOT ·

SIDE ELEVATION ·
 SCALE: THREE-QUARTERS INCH EQUALS ONE FOOT ·

Set 204
 SHEET 13